



PARTS CATALOGUE

Ai(A5.5AMH)'11 (6BF3/7XM1)



1K6BF-400E1

()

Ai(A5.5AMH)
PARTS CATALOGUE
©2010 by Yamaha Motor Co., Ltd.
1st edition, August 2010
All rights reserved.
Any reprinting or unauthorized use
without the written permission of
Yamaha Motor Co., Ltd.
is expressly prohibited.
Printed in Japan.

FOREWORD

This Parts Catalogue is related to the parts for the model(s) on the cover page. When you are ordering replacement parts, please refer to this Parts Catalogue and quote both part numbers and part names correctly.

1. Modifications or additions which have been made after the issue of the Parts Catalogue will be announced in the Parts News.
It is advisable that you make the necessary corrections to the Parts Catalogue according to the Parts News.

2. Abbreviations

The following abbreviations are used in this Parts Catalogue.

“UR” Use specified parts number.

“UN” Use as many as needed.

“AP” Alternate Parts

“LM” Locally Made (Parts need to be ordered locally)

“F#” Frame No. (Applicable machine No.)

“O/S” Over Size

3. The number of components for assembly

- Parts, which are to be supplied in an assembly, are listed with a dot (.) in front of the part name as shown below.
- The numeral appearing to the right of each component part indicates the quantity of parts for each assembly unit.

PART NO.	DESCRIPTION	Q'TY	REMARKS
2F5-83310-60	FRONT FLASHER LIGHT ASSY	2	
115-83311-60	.BULB (6V-18W)	1	

4. Applicable colours of graphics are represented in the “REMARKS” as shown below.

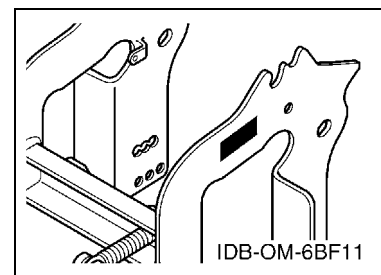
PART NO.	DESCRIPTION	Q'TY	REMARKS
2N4-24110-00-X5	FUEL TANK COMP.	2	MXR
3J1-24240-10	.GRAPHIC, FUEL TANK	1	FOR MXR

5. Note that the illustrations for reference in finding parts numbers are not to be used for assembling. When assembling, please use the applicable service manual.

6. The asterisk (*) before a reference number indicates modified items after the first edition.

7. Applicable Serial No.

Engine Serial No.



8. Applicable Engine Starting Serial No.

Model	Serial No.	Model	Serial No.
A5.5A	6BF-1001461		

9. Applicable Colour Code

Abbreviation	Colour Name	Colour Code
DB9	DARK BLUISH GRAY SOLID 9	001S

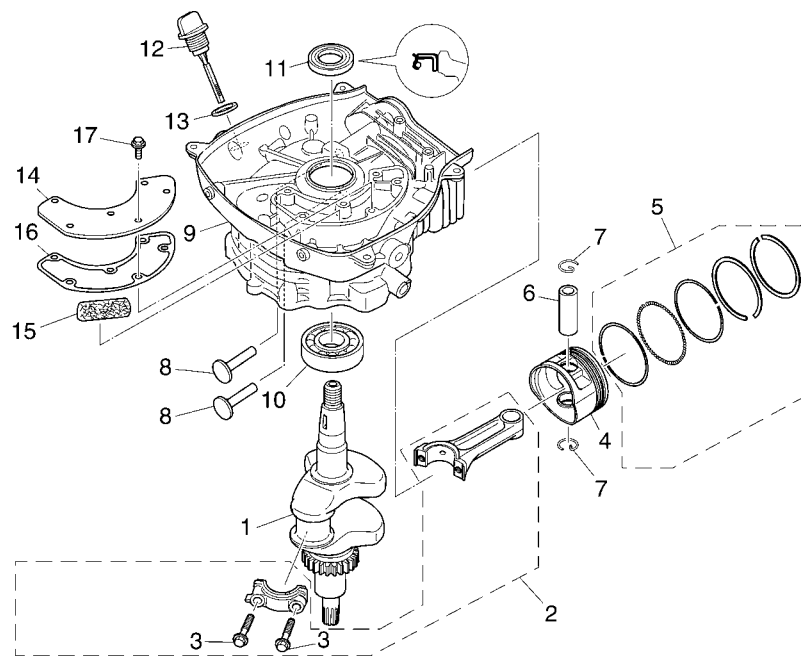
10. Quantity Column Information

Column No.	Name Of Q'ty Column	Applicable Model
1	6BF3	Ai(A5.5AMH)

CONTENTS

CYLINDER	1
CRANKSHAFT & PISTON	2
CRANKCASE COVER	3
VALVE	4
INTAKE	5
CARBURETOR	6
EXHAUST	7
GOVERNOR & FUEL TANK	8
STARTER	10
AIR SHROUD & ELECTRICAL	11
HANDLE	12
BRACKET	13
PLANET GEAR	14
UPPER CASING & BRACKET	15
LOWER CASING & DRIVE	16
INDEX	
NUMERICAL INDEX	17

[illegible]




6BF1400-H020

FIG. 2 CRANKSHAFT & PISTON

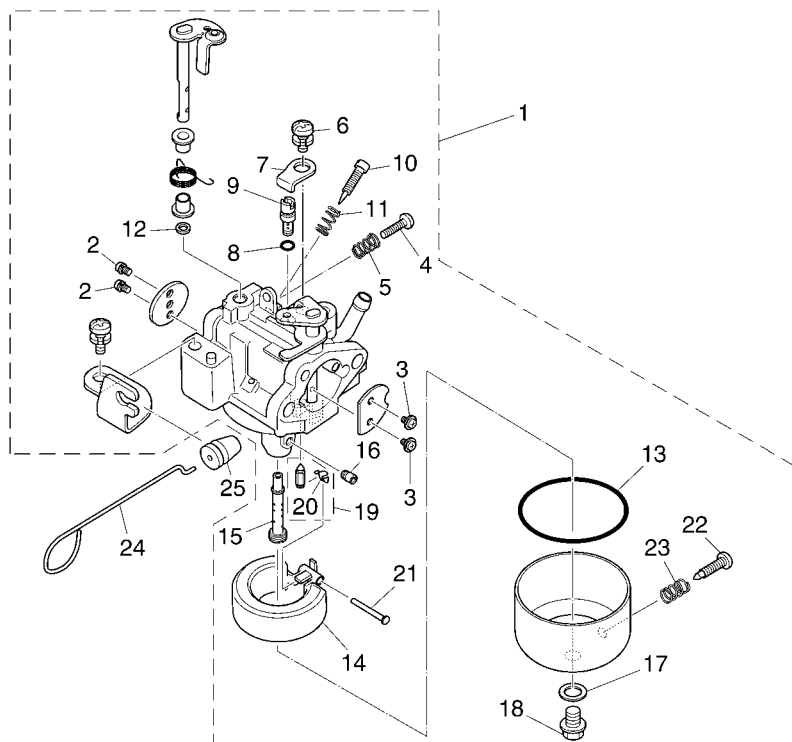
REF. NO.	PART NO.	DESCRIPTION	6BF3				REMARKS
1	7XM-11400-00	CRANKSHAFT ASSY	1				
2	7XM-11650-00	CONNECTING ROD ASSY	1				
3	JA9-11654-01	.BOLT, CONNECTING ROD	2				
4	7NJ-11631-00-98	PISTON (STD)	1				
	7NJ-11635-00	PISTON (0.25MM O/S)	1				AP
	7NJ-11636-00	PISTON (0.50MM O/S)	1				AP
5	7WC-11610-00	PISTON RING SET (STD)	1				
	7WC-11604-00	PISTON RING SET (0.25MM O/S)	1				AP
	7WC-11605-00	PISTON RING SET (0.50MM O/S)	1				AP
6	4H7-11633-00	PIN, PISTON	1				
7	93450-17025	CIRCLIP	2				
8	7WC-12153-00	LIFTER, VALVE	2				
9	7XM-15111-01	CRANKCASE 1	1				
10	93306-20511	BEARING	1				
11	93102-25090	OIL SEAL	1				
12	7XM-15362-00	PLUG, OIL LEVEL	1				
13	90430-17002	GASKET	1				
14	7XM-11168-00	COVER, BREATHER	1				
15	JR7-11163-00	ELEMENT	1				
16	7XM-11169-00	GASKET, BREATHER COVER	1				
17	95807-06012	BOLT, FLANGE	6				

[illegible]

[illegible]



REF. NO.	PART NO.	DESCRIPTION	6BF3				REMARKS
1	90116-06493	BOLT, STUD	2				
2	7XM-13596-00	JOINT, CARBURETOR 2	1				
3	7XM-13557-00	GASKET	3				
4	7XM-12652-00	AIR SHROUD, CYLINDER 2	1				
5	7XM-13567-00	GASKET	1				
6	7XM-14411-00	CASE, AIR CLEANER 1	1				
7	7NB-14412-00	CAP, CLEANER CASE 1	1				
8	7XM-14468-00	PLATE,ELEMENT FITTING	1				
9	7NB-14451-00	ELEMENT, AIR CLEANER	1				
10	7NN-14422-00	CAP, CLEANER CASE 2	1				
11	90122-06017	BOLT, WING	1				
12	7NB-14477-00	PLATE	1				
13	95707-06500	NUT, FLANGE	2				
14	7UF-24155-00	INDICATOR, CHOKE	1				
15	7XM-11166-00	PIPE, BREATHER 1	1				
16	90467-12M11	CLIP	1				

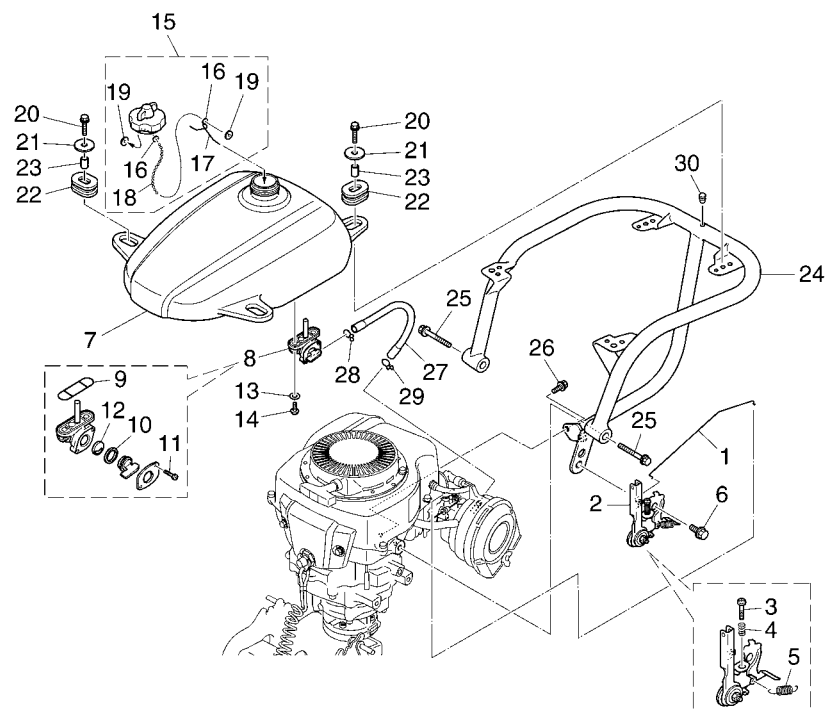


FWD
6BF1400-H060

FIG. 6 CARBURETOR

REF. NO.	PART NO.	DESCRIPTION	6BF3				REMARKS
1	7XM-14101-00	CARBURETOR ASSY 1	1				
2	7RH-14216-00	.SCREW	2				
3	7RH-14486-00	.SCREW, ROD	2				
4	7XM-14922-00	.SCREW, THROTTLE	1				
5	82A-14134-00	.SPRING, AIR ADJUSTING	1				
6	7XM-14216-00	.SCREW	1				
7	7XM-14243-00	.PLATE	1				
8	2H0-14147-00	.O-RING	1				
9	7XM-14142-42	.JET, PILOT (# 42.5)	1				
10	7LV-14211-00	.SCREW, PILOT ADJUSTING	1				
11	82A-14134-00	.SPRING, AIR ADJUSTING	1				
12	6K8-14597-10	.WASHER	1				
13	7G0-14184-00	.GASKET, FLOAT CHAMBER	1				
14	7EG-14185-00	.FLOAT	1				
15	7XM-1495H-4A	.NOZZLE, MAIN	1				
16	7NN-14231-34	.JET, MAIN (# 86.3)	1				
17	7G0-14227-00	.WASHER	1				
18	7XM-14162-00	.BOLT, HOLDING	1				
19	5YY-14150-00	.NEEDLE ASSY	1				
20	7EG-14159-00	..CLIP	1				
21	7CN-E4186-00	.PIN, FLOAT	1				
22	7XM-14191-00	.PLUG, DRAIN	1				
23	82A-14134-00	.SPRING, AIR ADJUSTING	1				
24	7UF-14583-10	LEVER, CHOKE	1				
25	7UF-14445-00	GROMMET	1				

[illegible]



FWD
6BF1400-H080

FIG. 8 GOVERNOR & FUEL TANK

REF. NO.	PART NO.	DESCRIPTION	6BF3				REMARKS
1	7XM-11928-00	ROD, LINK	1				
2	7XM-41240-00	THROTTLE LEVER COMP.	1				
3	97880-05025	.SCREW, PAN HEAD	1				
4	90501-100A6	.SPRING, COMPRESSION	1				
5	90506-08001	.SPRING, TENSION	1				
6	95807-08014	BOLT, FLANGE	1				
7	6BF-24110-00	FUEL TANK COMP.	1				
8	2VN-24500-02	FUEL COCK ASSY 1	1				
9	4X8-24512-00	.O-RING	1				
10	3AJ-24534-01	.SEAL, COCK	1				
11	98507-03008	.SCREW, PAN HEAD	2				
12	3AC-24523-00	.VALVE PACKING	1				
13	90202-05187	WASHER, PLATE	2				
14	90149-06011	SCREW	2				
15	68D-24610-00	CAP ASSY	1				
16	90468-100A0	.CLIP	2				
17	624-24634-00	.HOOK, CHAIN BALL	1				
18	69M-24633-00	.CHAIN, BALL	1				
19	67D-21757-00	.WASHER, SPECIAL 1	2				
20	95817-06025	BOLT, FLANGE	4				
21	90201-060L5	WASHER, PLATE	4				
22	90480-01400	GROMMET	4				
23	90387-07598	COLLAR	4				
24	7XM-24115-01	STAY, FUEL TANK 1	1				
25	95827-08050	BOLT, FLANGE	2				
26	95827-06016	BOLT, FLANGE	2				
27	7XM-24311-00	PIPE, FUEL 1	1				

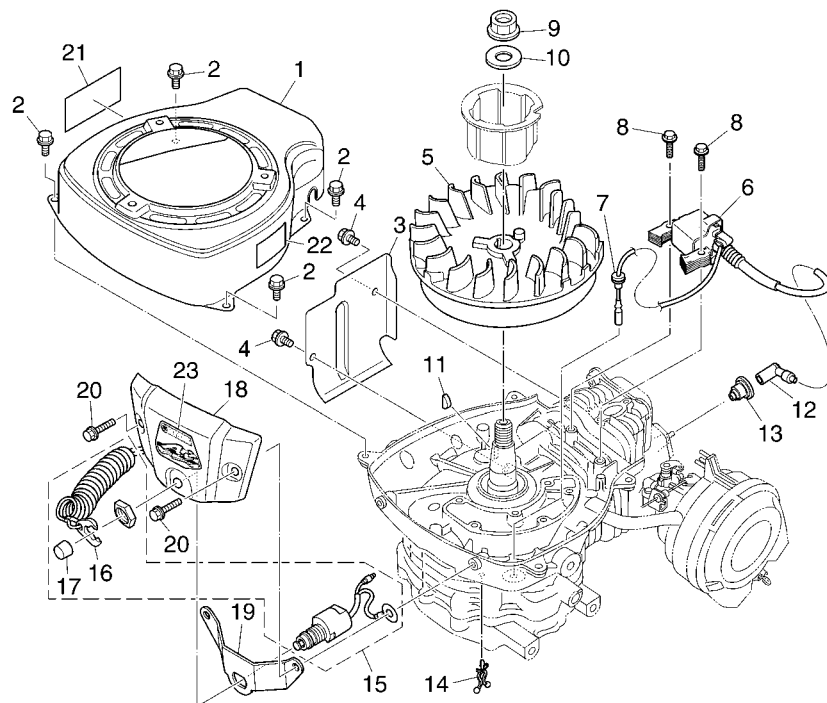
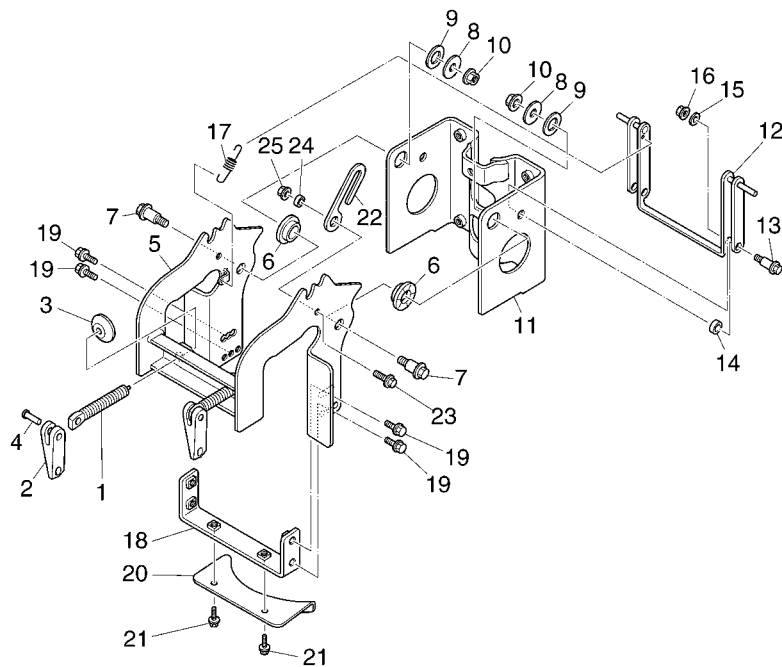


FIG. 10 AIR SHROUD & ELECTRICAL

REF. NO.	PART NO.	DESCRIPTION	6BF3				REMARKS
1	7XM-12621-00	CASE, FAN	1				
2	95807-06012	BOLT, FLANGE	4				
3	7XM-12651-00	AIR SHROUD, CYLINDER 1	1				
4	95807-06012	BOLT, FLANGE	2				
5	7XM-85550-00	ROTOR ASSY	1				
6	7XM-85540-00	C.D.I. UNIT ASSY	1				
7	7XM-82595-00	GROMMET	1				
8	95827-06025	BOLT, FLANGE	2				
9	90170-14403	NUT	1				
10	92907-14200	WASHER	1				
11	90280-04052	KEY, WOODRUFF	1				
12	JN6-82370-00	PLUG CAP ASSY	1				
13	JE8-82372-00	SEAL, PLUG CAP	1				
14	90464-07078	CLAMP	1				
15	6BF-82575-00	ENGINE STOP SWITCH ASSY	1				
16	682-82556-00	.LANYARD, STOP SWITCH	1				
17	689-8257Y-00	.CAP	1				
18	7XM-82568-00	COVER, MAIN SWITCH	1				
19	7XM-8255V-00	PLATE, COVER	1				
20	90105-06010	BOLT, FLANGE	2				
21	6BF-42794-00	LABEL, WARNING (GENERAL)	1				
22	6BF-43174-00	LABEL, WARNING 1	1				
23	6BF-42677-00	GRAPHIC, FRONT	1				

[illegible]




6BF1400-H120

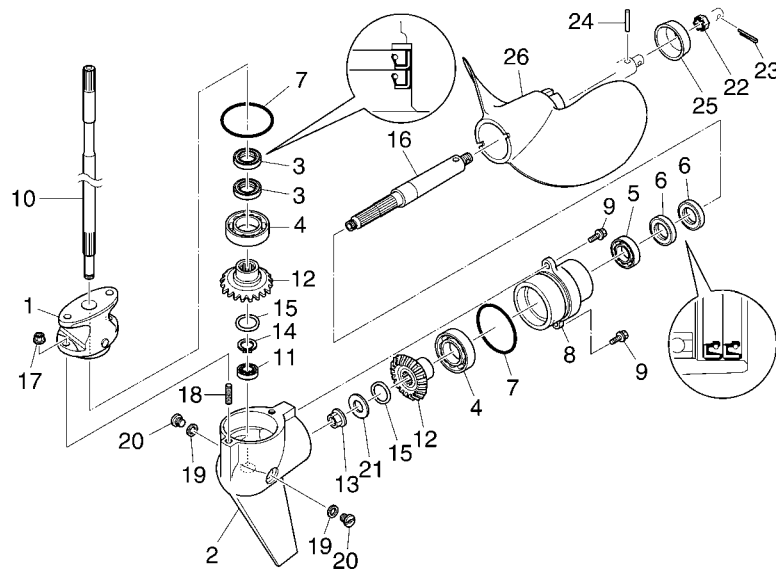
FIG. 12 BRACKET

REF. NO.	PART NO.	DESCRIPTION	6BF3				REMARKS
1	677-43116-01	SCREW, TRANSOM CLAMP	2				
2	6E0-43118-01	HANDLE, TRANSOM CLAMP	2				
3	620-43114-00	PAD, TRANSOM CLAMP	2				
4	90243-04M01	PIN	2				
5	6BF-43101-00	CLAMP BRACKET ASSY 1	1				
6	90381-12002	BUSH, SOLID	2				
7	90109-08186	BOLT	2				
8	90201-084K3	WASHER, PLATE	2				
9	90201-12588	WASHER, PLATE	2				
10	90179-08M15	NUT	2				
11	6BF-43312-00	BRACKET, SWIVEL 2	1				
12	6BF-43350-00	RECEIVER ASSY	1				
13	90109-06040	BOLT	2				
14	90387-1005B	COLLAR	2				
15	90201-060H9	WASHER, PLATE	2				
16	90179-06M28	NUT	2				
17	90506-10381	SPRING, TENSION	1				
18	6BF-43899-00	PLATE STOPPER	1				
19	90105-08142	BOLT, FLANGE	4				
20	6BF-43627-00	STOPPER	1				
21	95827-06016	BOLT, FLANGE	2				
22	6BF-43676-00	HOOK	1				
23	95827-06020	BOLT, FLANGE	1				
24	90387-06106	COLLAR	1				
25	90179-06M28	NUT	1				

[illegible]



REF. NO.	PART NO.	DESCRIPTION	6BF3				REMARKS
1	6BF-43311-00	BRACKET, SWIVEL 1	2				
2	90266-04M05	RIVET	1				
3	69M-42529-00	SCREW, FRICTION PIECE	1				
4	90501-12272	SPRING, COMPRESSION	1				
5	6L5-42561-00	KNOB, STEERING LOCK	1				
6	648-42528-00	PLATE, FRICTION	1				
7	95827-08020	BOLT, FLANGE	4				
8	6BF-43628-00	STOPPER	1				
9	95827-06020	BOLT, FLANGE	2				
10	6BF-42537-00	BUSHING, PIVOT SHAFT	4				
11	95812-06020	BOLT, FLANGE	4				
12	6BF-42521-00-1S	SHAFT, STEERING PIVOT	1				
13	93102-15M32	OIL SEAL	1				
14	6BF-42133-00	GASKET	1				
15	6BF-46177-10-9S	PIPE, DRIVE	1				
16	90116-08015	BOLT, STUD	2				
17	90116-08M60	BOLT, STUD	2				
18	90179-08M34	NUT	4				
19	99530-08016	PIN, DOWEL	2				
20	6BF-4631A-00	GSKT., CASE	1				
21	90105-08046	BOLT, FLANGE	6				



FWD
6BF2400-J150

FIG. 15 LOWER CASING & DRIVE

REF. NO.	PART NO.	DESCRIPTION	6BF3				REMARKS
1	6BF-5163A-10-1S	JOINT, FLANGE	1				
2	6BF-45311-00-1S	CASING, LOWER	1				
3	93101-15074	OIL SEAL	2				
4	93306-00433	BEARING	2				
5	93306-20201	BEARING	1				
6	93101-22M00	OIL SEAL	2				
7	93210-48214	O-RING	2				
8	6BF-45361-00-1S	CAP, LOWER CASING	1				
9	95875-06016	BOLT, FLANGE	2				
10	6BF-45511-00	SHAFT, DRIVE	1				
11	93306-90001	BEARING	1				
12	6BF-45551-00	PINION (20T)	2				
13	95707-10500	NUT, FLANGE	1				
14	99009-15400	CIRCLIP	1				
15	90206-15021	WASHER, WAVE	2				
16	6BF-45611-00	SHAFT, PROPELLER	1				
17	90179-06M28	NUT	2				
18	90116-06045	BOLT, STUD	2				
19	90430-08020	GASKET	2				
20	90340-08002	PLUG, STRAIGHT SCREW	2				
21	90201-106F2	WASHER, PLATE	1				
22	90171-10M01	NUT, CASTLE	1				
23	91490-30030	PIN. COTTER	1				
24	93607-42002	PIN, DOWEL	1				
25	6BF-45985-00	CAP, PROPELLER	1				
26	6BF-45912-00-94	PROPELLER (2X11-4/5"X14-1/4")	1				

NUMERICAL INDEX

PART NO.	REF. NO.	PART NO.	REF. NO.	PART NO.	REF. NO.	PART NO.	REF. NO.	PART NO.	REF. NO.	PART NO.	REF. NO.
7XM-11111-01	1 - 1	7G0-14184-00	6 - 13	7XM-41240-00	8 - 2	7DH-E5715-00	9 - 7	90381-12002	12 - 6	95812-06020	14 - 11
JR7-11163-00	2 - 15	7EG-14185-00	6 - 14	6BF-42133-00	14 - 14	7DH-E5716-00	9 - 8	90381-25001	13 - 6	95817-06012	3 - 12
7XM-11166-00	5 - 15	7XM-14191-00	6 - 22	6BF-42521-00-1S	14 - 12	7DH-E5719-00	9 - 10	90387-06106	12 - 24	95817-06025	8 - 20
7XM-11168-00	2 - 14	7LV-14211-00	6 - 10	648-42528-00	14 - 6	7DH-E5741-00	9 - 4	90387-07598	8 - 23	95817-08020	11 - 4
7XM-11169-00	2 - 16	7RH-14216-00	6 - 2	69M-42529-00	14 - 3	7DH-E5743-00	9 - 6	90387-1005B	12 - 14	95827-06012	1 - 9
7XM-11181-00	1 - 2	7XM-14216-00	6 - 6	6BF-42537-00	14 - 10	7DH-E5751-00	9 - 11	90430-08020	15 - 19	95827-06016	7 - 5
7XM-11191-00	1 - 7	7G0-14227-00	6 - 17	6L5-42561-00	14 - 5	7DH-E5755-00	9 - 12	90430-08209	13 - 12		8 - 26
7XM-11193-00	1 - 8	7NN-14231-34	6 - 16	6BF-42677-00	10 - 23	7DH-E5793-00	9 - 9	90430-10M11	3 - 4		12 - 21
7XM-11400-00	2 - 1	7XM-14243-00	6 - 7	6BF-42794-00	10 - 21	6BF-W2788-01	13 - 1	90430-17002	2 - 13	95827-06020	12 - 23
7WC-11604-00	2 - 5	7XM-14411-00	5 - 6	6BF-43101-00	12 - 5	90105-06010	10 - 20	90464-07078	10 - 14		14 - 9
7WC-11605-00	2 - 5	7NB-14412-00	5 - 7	620-43114-00	12 - 3	90105-08046	14 - 21	90467-09006	8 - 29	95827-06025	10 - 8
7WC-11610-00	2 - 5	7NN-14422-00	5 - 10	677-43116-01	12 - 1	90105-08142	12 - 19	90467-10008	8 - 28	95827-08020	14 - 7
7NJ-11631-00-98	2 - 4	7UF-14445-00	6 - 25	6E0-43118-01	12 - 2	90109-06040	12 - 13	90467-12M11	5 - 16	95827-08035	3 - 10
4H7-11633-00	2 - 6	7NB-14451-00	5 - 9	6BF-43174-00	10 - 22	90109-08186	11 - 5	90468-100A0	8 - 16	95827-08045	1 - 4
7NJ-11635-00	2 - 4	7XM-14468-00	5 - 8	6BF-43311-00	14 - 1		12 - 7	90480-01400	8 - 22	95827-08050	8 - 25
7NJ-11636-00	2 - 4	7NB-14477-00	5 - 12	6BF-43312-00	12 - 11	90116-06045	15 - 18	90501-100A6	8 - 4	95827-08065	1 - 3
7XM-11650-00	2 - 2	7RH-14486-00	6 - 3	6BF-43350-00	12 - 12	90116-06493	5 - 1	90501-12272	14 - 4	95875-06016	15 - 9
JA9-11654-01	2 - 3	7UF-14583-10	6 - 24	6BF-43627-00	12 - 20	90116-08015	14 - 16	90501-205J4	4 - 3	97880-05025	8 - 3
7XM-11928-00	8 - 1	6K8-14597-10	6 - 12	6BF-43628-00	14 - 8	90116-08M60	14 - 17	90506-08001	8 - 5	98507-03008	8 - 11
7NJ-12111-00	4 - 1	JA9-14613-00	7 - 8	6BF-43676-00	12 - 22	90122-06017	5 - 11	90506-10381	12 - 17	99009-15400	15 - 14
7NJ-12117-00	4 - 4	7XM-14711-00	7 - 2	6BF-43899-00	12 - 18	90149-06011	8 - 14	91317-05025	13 - 8	99530-08016	3 - 5
7NJ-12118-00	4 - 5	7XM-14718-00	7 - 3	6BF-45311-00-1S	15 - 2	90170-14403	10 - 9	91490-30030	15 - 23		14 - 19
51Y-12119-00	4 - 11	7XM-14922-00	6 - 4	6BF-45361-00-1S	15 - 8	90171-10M01	15 - 22	92907-14200	10 - 10	99530-10114	1 - 5
7NJ-12121-00	4 - 2	7XM-1495H-4A	6 - 15	6BF-45511-00	15 - 10	90179-06M28	12 - 16	93101-15074	15 - 3		
7NN-12151-00	4 - 6	7XM-15111-01	2 - 9	6BF-45551-00	15 - 12		12 - 25	93101-22M00	15 - 6		
7WC-12153-00	2 - 8	7XM-15362-00	2 - 12	6BF-45611-00	15 - 16		15 - 17	93101-25M03	13 - 7		
7NJ-12154-00	1 - 10	7XM-15411-00	3 - 6	6BF-45912-00-94	15 - 26	90179-08M15	11 - 6	93102-15M32	14 - 13		
7XM-12155-00	4 - 10	7XM-15451-00	3 - 9	6BF-45985-00	15 - 25		12 - 10	93102-25090	2 - 11		
7FK-12157-00	4 - 8	7XM-15723-00	9 - 14	6BF-46111-00	13 - 2	90179-08M34	14 - 18	93102-25448	3 - 8		
7FK-12158-00	4 - 9	67D-21757-00	8 - 19	6BF-46177-10-9S	14 - 15	90201-060H9	12 - 15	93210-48214	15 - 7		
7NN-12165-02	4 - 7	6BF-23463-00	11 - 3	6BF-4631A-00	14 - 20	90201-060L5	8 - 21	93306-00433	15 - 4		
7XM-12170-00	3 - 1	6BF-24110-00	8 - 7	6BF-5163A-10-1S	15 - 1	90201-064H0	7 - 6	93306-20201	15 - 5		
7XM-12621-00	10 - 1	7XM-24115-01	8 - 24	JN6-82370-00	10 - 12	90201-084K3	12 - 8	93306-20511	2 - 10		
7XM-12651-00	10 - 3	7UF-24155-00	5 - 14	JE8-82372-00	10 - 13	90201-106F2	15 - 21		3 - 7		
7XM-12652-00	5 - 4	7XM-24311-00	8 - 27	682-82556-00	10 - 16	90201-12190	11 - 7	93306-90001	15 - 11		
67D-13102-01	3 - 11	2VN-24500-02	8 - 8	7XM-8255V-00	10 - 19	90201-12471	13 - 9	93450-17025	2 - 7		
7XM-13557-00	5 - 3	4X8-24512-00	8 - 9	7XM-82568-00	10 - 18	90201-12588	11 - 9	93607-42002	15 - 24		
7XM-13567-00	5 - 5	3AC-24523-00	8 - 12	6BF-82575-00	10 - 15		12 - 9	94702-00331	1 - 6		
7XM-13596-00	5 - 2	3AJ-24534-01	8 - 10	689-8257Y-00	10 - 17	90202-05187	8 - 13	95307-06600	7 - 7		
7XM-14101-00	6 - 1	68D-24610-00	8 - 15	7XM-82595-00	10 - 7	90206-12054	11 - 8	95607-06615	7 - 1		
82A-14134-00	6 - 5	69M-24633-00	8 - 18	7XM-85540-00	10 - 6	90206-15021	15 - 15	95707-06500	5 - 13		
	6 - 11	624-24634-00	8 - 17	7XM-85550-00	10 - 5	90243-04M01	12 - 4	95707-10500	15 - 13		
	6 - 23	6BF-24840-00	13 - 10	7CN-E2287-00	3 - 2	90266-04M05	14 - 2	95807-06008	7 - 4		
7XM-14142-42	6 - 9	6BF-26223-00	11 - 1	7CN-E4186-00	6 - 21	90280-04052	10 - 11		9 - 13		
2H0-14147-00	6 - 8	6BF-26224-00	11 - 2	7DH-E5710-00	9 - 1	90338-06018	8 - 30	95807-06012	2 - 17		
5YY-14150-00	6 - 19	6BF-27275-00	13 - 5	7CP-E5711-00	9 - 2	90340-08002	13 - 11		10 - 2		
7EG-14159-00	6 - 20	6BF-27881-00	13 - 4	7DH-E5713-00	9 - 5		15 - 20		10 - 4		
7XM-14162-00	6 - 18	6BF-27882-00	13 - 3	7DH-E5714-00	9 - 3	90340-10M10	3 - 3	95807-08014	8 - 6		